

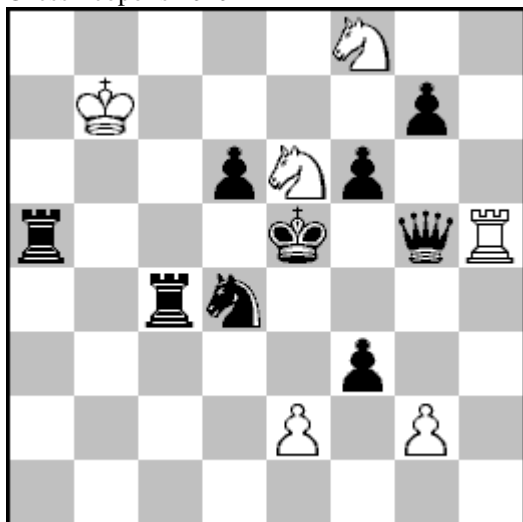
ŽIVKO JANEVSKI – 60 JT 2013

The Macedonian Problemist announces a formal jubilee tourney for h#2s to mark the 60th birthday of its regular contributor Živko Janevski (born on 4 August 1953), Grandmaster of the FIDE for Chess Compositions, International Judge of the FIDE for Chess Compositions, the leading Macedonian problemist in the last several decades and one of the world's best and most successful composers (4th on the total FIDE Album points list up to the 2004-2006 Album).

Theme: A prolonged Black self-pin. One or both pieces from a black pin-mechanism play(s) along the pin-line in two or more phases – two or more solutions, solution + set-play, or solution + tempo try, but twins are not allowed. There may be one pin mechanism or more pin mechanisms. The thematic pin-mechanism(s) can be created during the solution. Although play by a white pinning piece is not a thematic requirement, composers are encouraged to try showing such play in addition to thematic black moves. Judge: Živko Janevski

Please send problems by 15 November 2013 by snail mail to Zoran Gavrilovski, P. fah 137, Skopje MK-1001, Macedonia, or to Z. Gavrilovski's e-mail address mprobl@yahoo.com.

Example for the JT:
Živko Janevski
Chess Leopolis 2010



H#2 3.1.1.1. 6+9

- 1.Kf5** ef3 **2.Te5** g4# - I. form – the black King plays
1.Td5 Sc5 **2.Df5** Sg6# - II. form – the black pinned piece plays
1.Kd5 gf3 **2.De5** e4# - III. form – both pieces (black King and black pinned piece) play.